

WORLD FIRE ALARM SYSTEM™

The central image is a composite graphic. It features a world map in the background with dashed lines and small icons representing global connectivity. In the foreground, there are two large, bright orange and yellow fireballs. Between them is a glowing blue and green globe that contains a detailed illustration of a modern multi-story residential or commercial building. The text 'The Fireguard of your property' is overlaid in the center of this graphic.

The Fireguard of your property

Introduction

- **The World Fire Alarm System™ protects your private or your company's property as also as isolated hotel units and other buildings offering you 80% successful fire detection.**

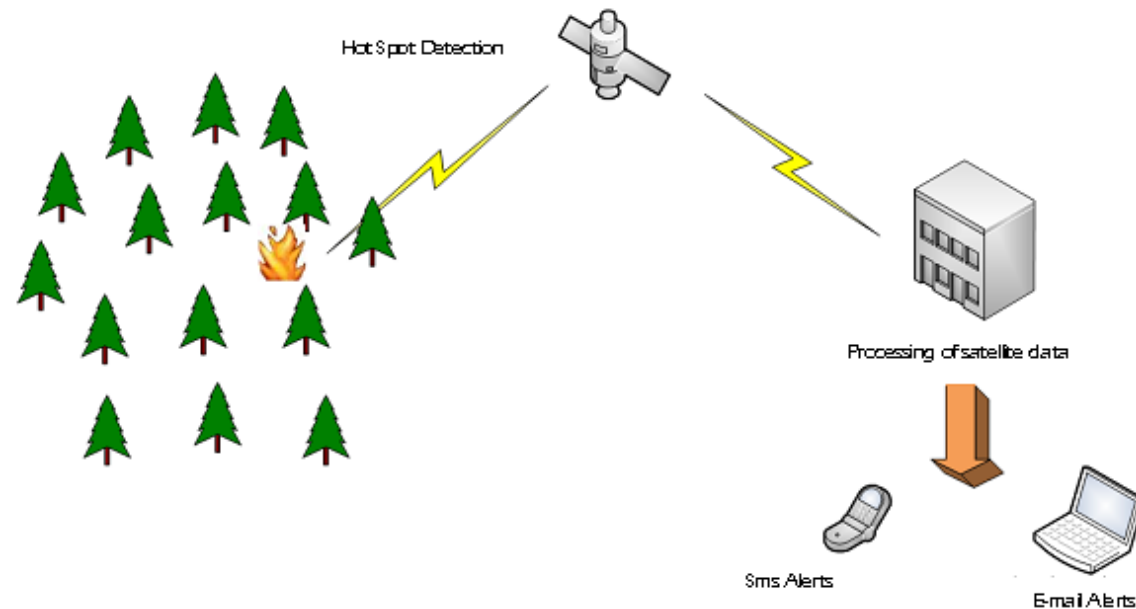


How it Works

- The World Fire Alarm System™ offers you near real-time information on fire protection, by constantly monitoring the whole planet through **geostationary satellites NASA Aqua/Terra MODIS and AVHRR NOAA**.
- In the case of a fire detection, indicating spots are generated on a map. The received and processed data is updated every **15 minutes**, guaranteeing fast and current updates.
- Categories of the System
 - BASIC,
 - PLUS and
 - PREMIUM



How it Works



- The World Fire Alarm System™, provides an area scanning of 15 to 40 km radius around the customer's facilities.
- If a fire is detected near the customer's facilities, notification alerts in the form of SMS and email messages are automatically sent to the customer.

The BASIC Service

- Subscribers of the BASIC service, receive notifications every **1 hour** in the form of **SMS** alerts which hold information about the exact location of the fire on the map (coordinates) and also the nearest town found with respect to that point.
- Area Scanning: 15 km

- **SMS ALERT sample**

Aratos Technologies S.A.
World Fire Alarm System BASIC
Detected Fires

Lat:40.737 Lon:22.725 Date:2014/06/07 Time:14:00

Nearest Town: Athikia



The PLUS Service

- Subscribers of the PLUS service, receive notification alerts every **30 minutes** in the form of **SMS** alerts, which include a url link to a specially designed webpage. This webpage holds a picture of the client's area of interest, where the fire spots are marked accordingly on the map. This service also submits notifications in the form of **E-MAIL** alerts, holding an attachment of the image described.

- Area Scanning : 15 km

- **EMAIL ALERT sample**

World Fire Alarm System PLUS.

Detected Fires

Lat:40.737 Lon:22.725 Date:2014/06/07 Time:14:00

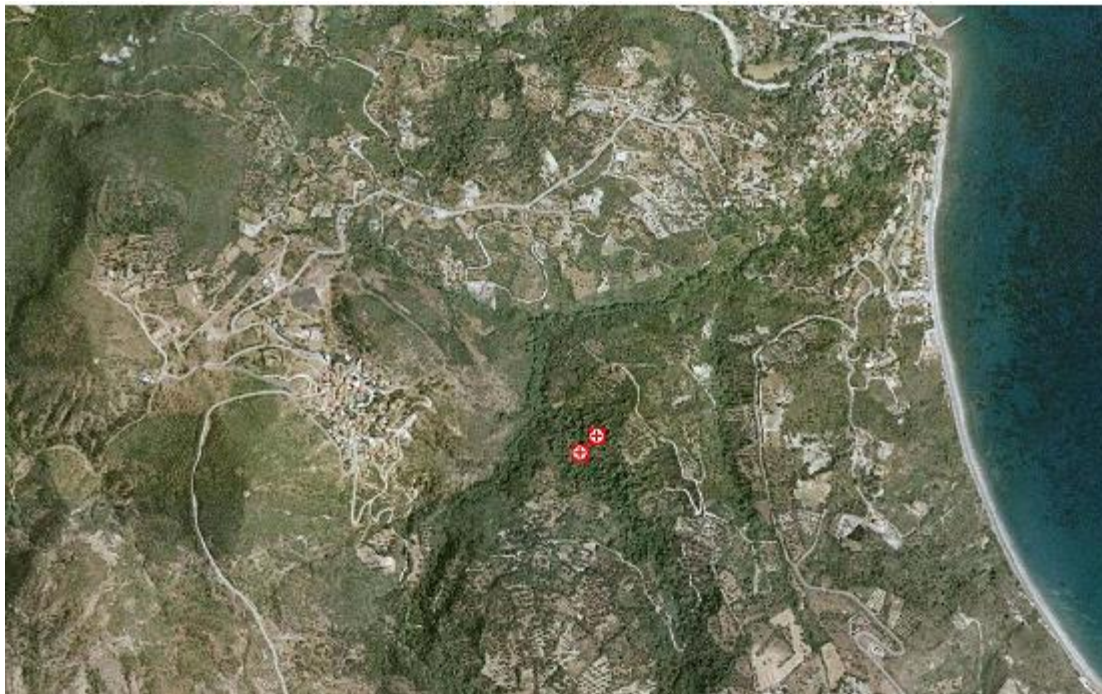
Nearest Town:Athikia

Please see the attached image for details.



The PLUS Service

- Example of the map where the hot spots are depicted



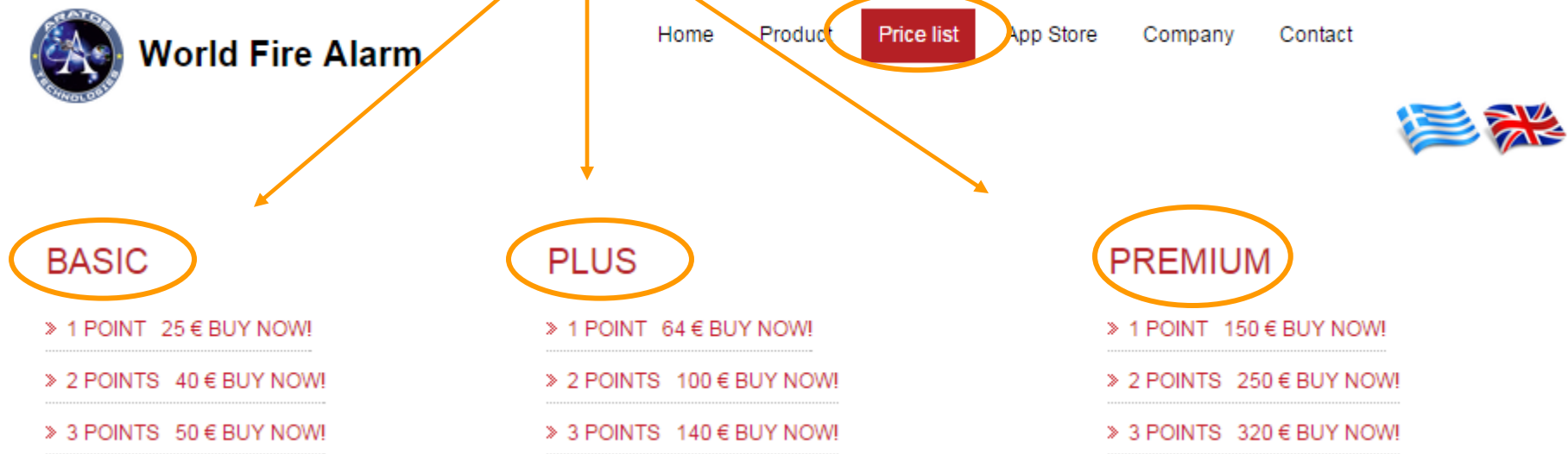
The PREMIUM Service

- Subscribers of the PREMIUM service, receive notification alerts every **15 minutes** in the form of **SMS** alerts, including a url link to a specially designed webpage visible from any device (regardless of screen size and resolution). This webpage holds a picture of the client's area of interest, where the fire spots are marked accordingly on the map. This service also submits notifications in the form of **E-MAIL** alerts, holding an attachment of the image described.
- Area Scanning : 40 km
- **EMAIL ALERT**
European Fire Guard Alarm System PREMIUM.
Detected Fires
Lat:40.737 Lon:22.725 Date:2014/06/07 Time:14:00
Nearest Town:Athikia
Please see the attached image for details.



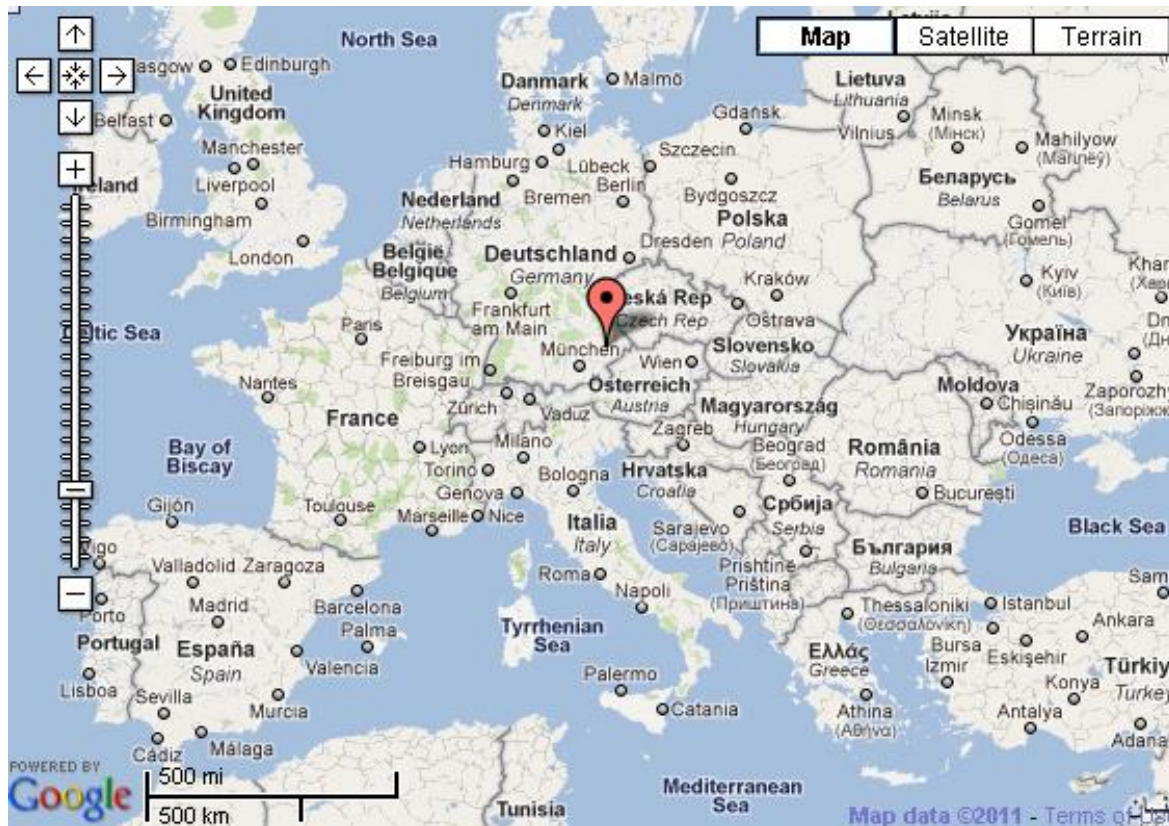
How can I get it

- Navigate to www.worldfirealarm.com → Price List
- Choose the Service and the number of the points that you want



How can I get it

- Then choose your place of interest on the map



Contact us

info@aratos.gr

wfa@aratos.gr

www.aratos.gr

www.worldfirealarm.com

